

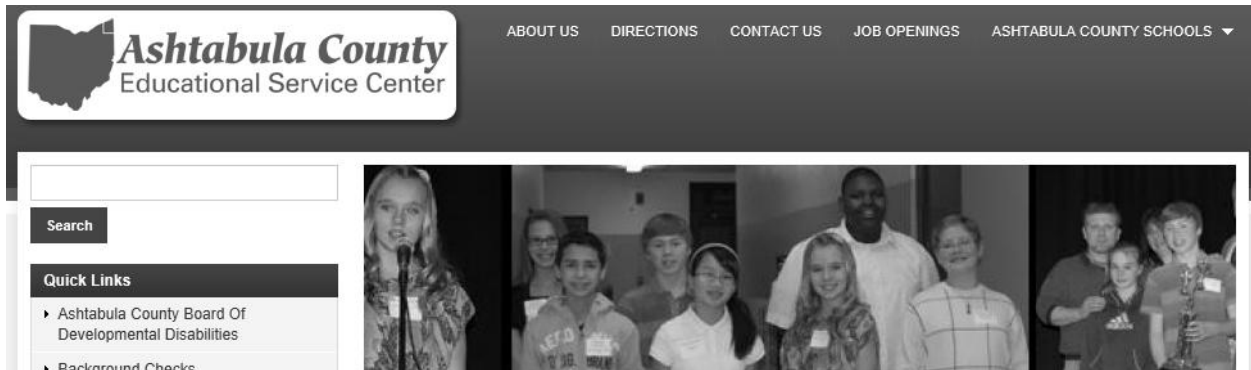
Ashtabula County Assessment Development: Middle School

Google Groups User Guide

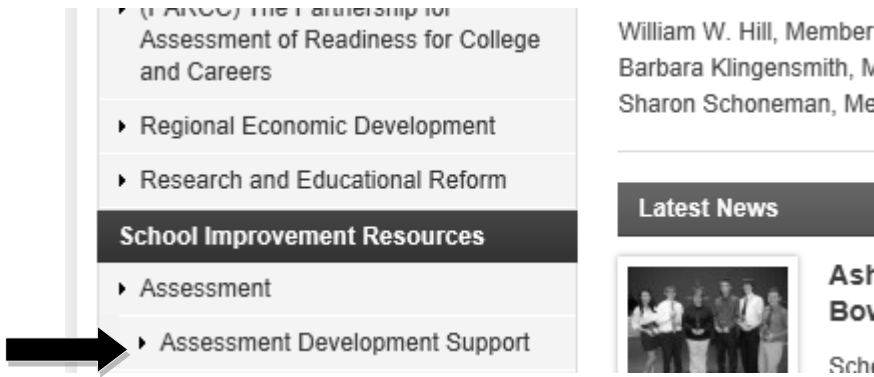
June 11, 2013

Welcome to our Assessment Resources and Development collaboration site. This site and our Google Group will allow each participant in the assessment project to communicate with each other and share their assessment work throughout the 2013-14 school year. This guide will help you to access and use the site.

To gain access to Assessment Resources as well as our collaboration site go to the Ashtabula Count ESC Website: <http://www.acesc.k12.oh.us/>



At the ESC website click on Assessment Development Support in the left hand side menu under School improvement Resources.



At the ESC Assessment Support page you can access our Google Group site -

Assessment Development Support

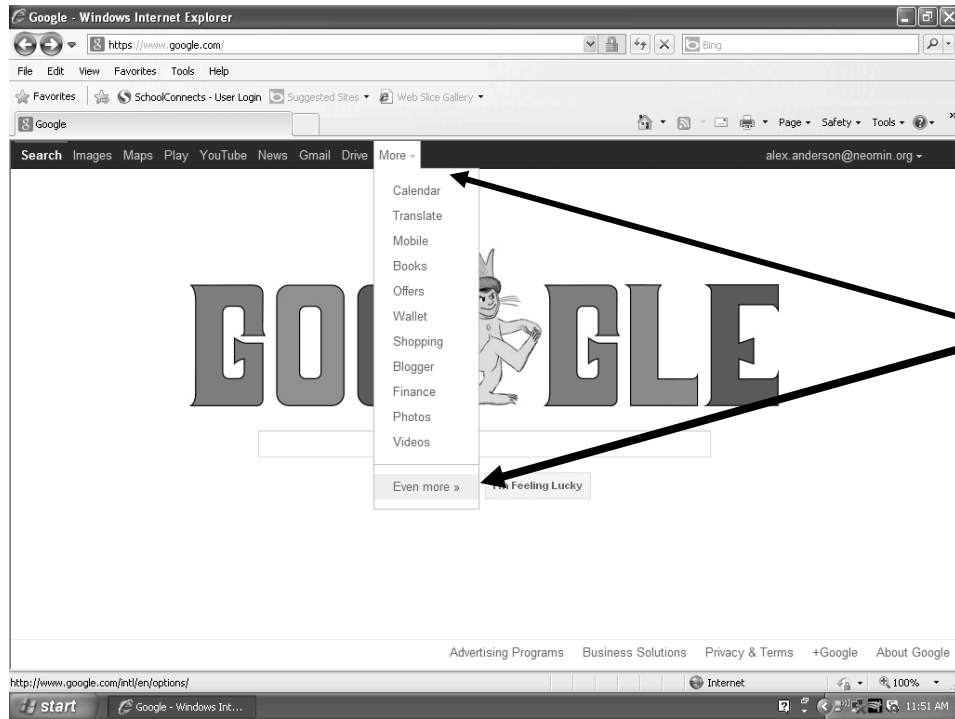
This page supports the development of assessments by providing research, training and resources to assist teachers and teacher teams to develop classroom formative, summative and performance assessments.

The content on this page is intended to support the implementation of Student Growth measures as a component of teacher evaluations as well as the successful transition to Ohio's revised content standards and the implementation of the Common Core.

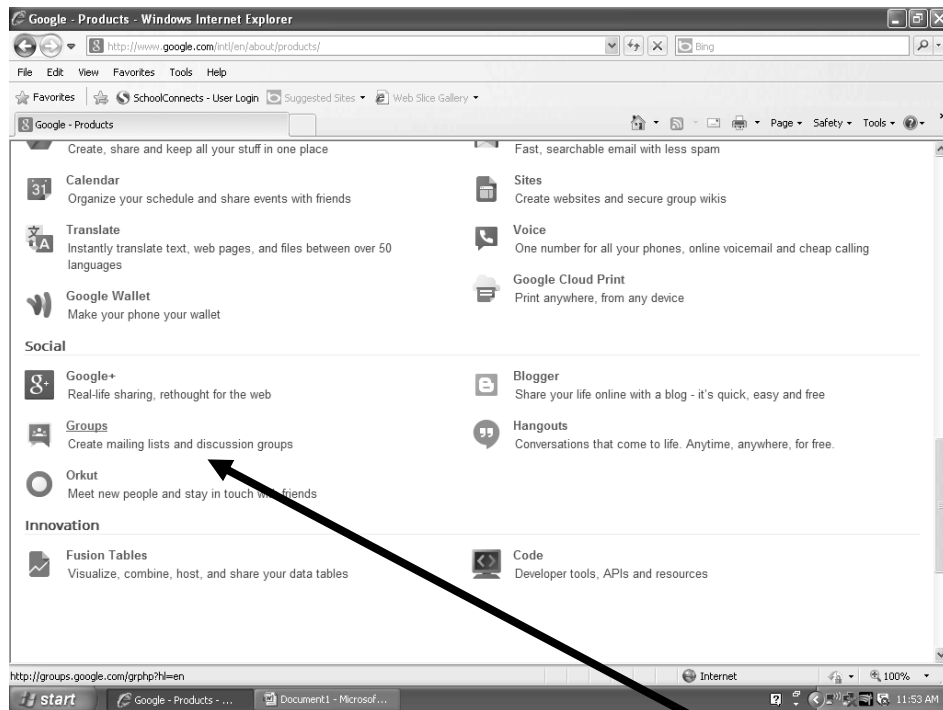
[Ashtabula County Assessment Development: Middle School - Google Groups Sign In Page - Click Here](#)

On this page you can also access assessment resources including many sites from which you can acquire test questions. You can also access our Google Site as follows:

Ashtabula County Assessment Development: Middle School
Google Groups User Guide
June 11, 2013



1. Begin by selecting “even more” out of the “more” drop down box on google’s main page.



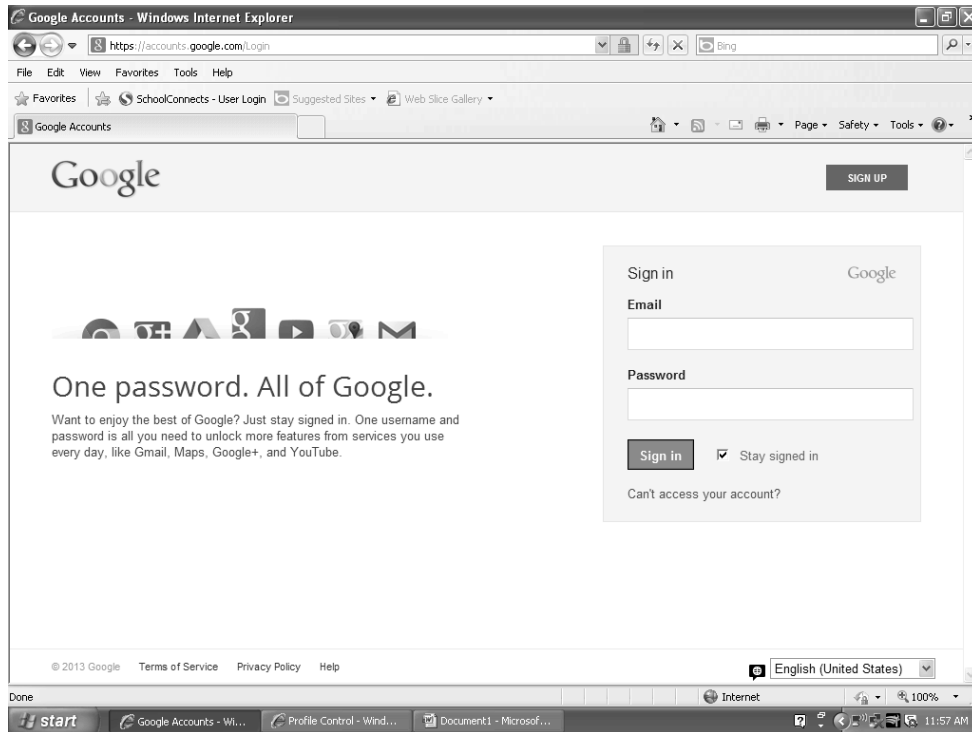
2. Select Groups off of the “even more” page.

Note: We have invited you to join this group using your NEOMIN email address.

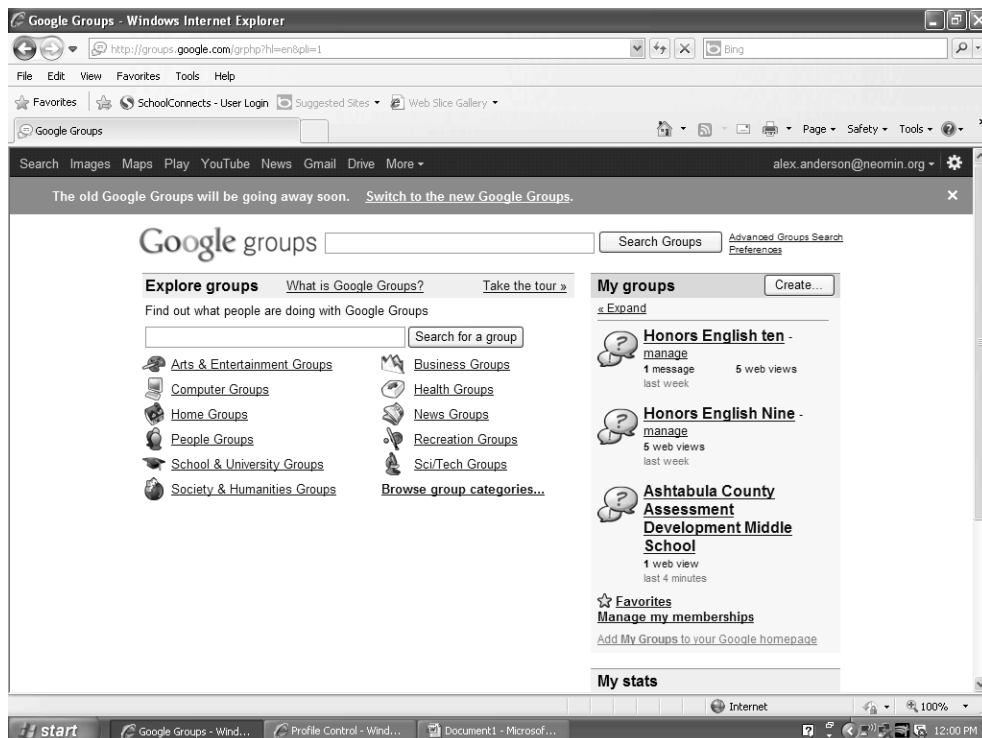
Ashtabula County Assessment Development: Middle School

Google Groups User Guide

June 11, 2013



3. Log in

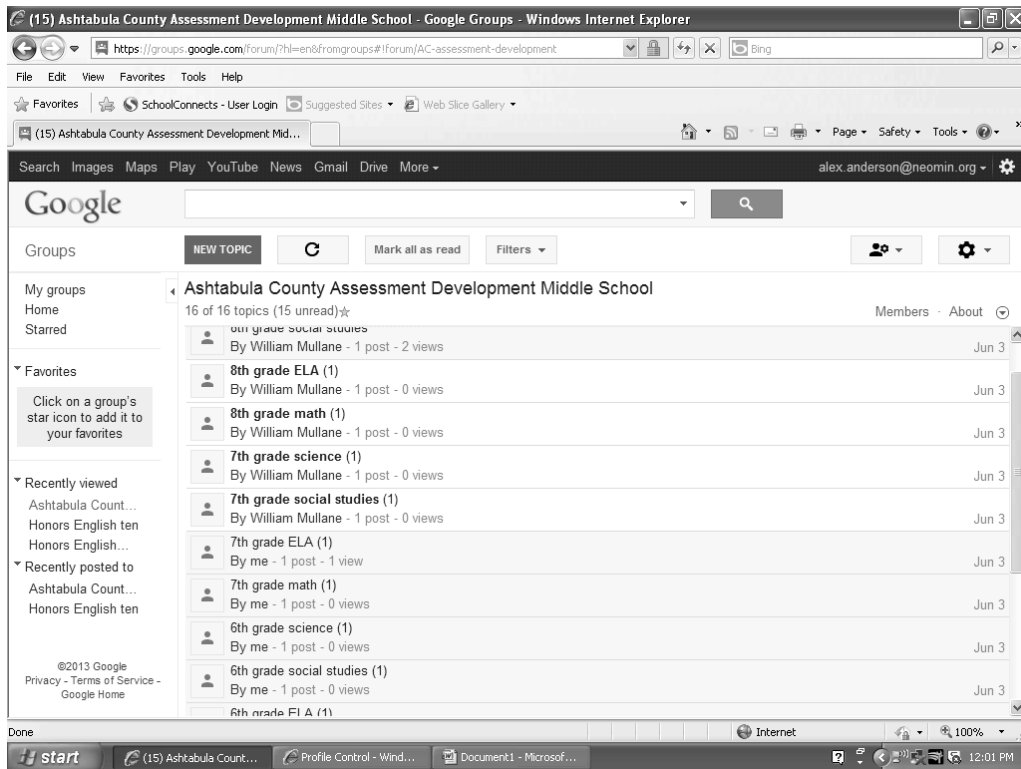


4. Select "Ashtabula County Assessment Development Middle School"

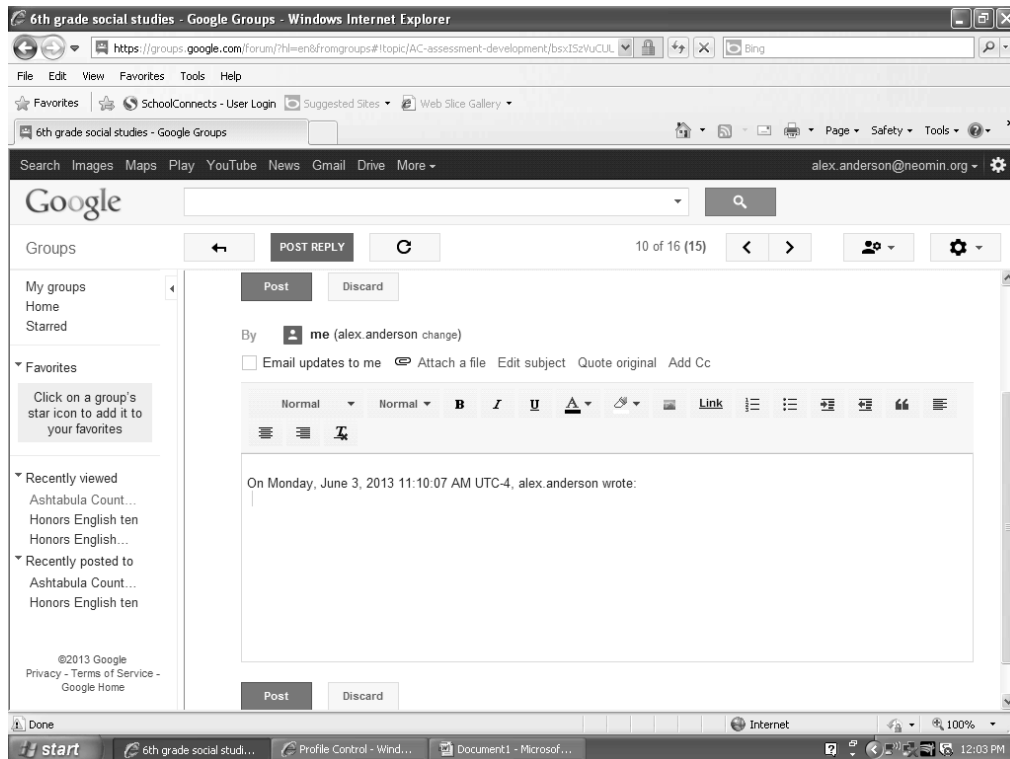
Ashtabula County Assessment Development: Middle School

Google Groups User Guide

June 11, 2013



5. Click on your grade level and subject.



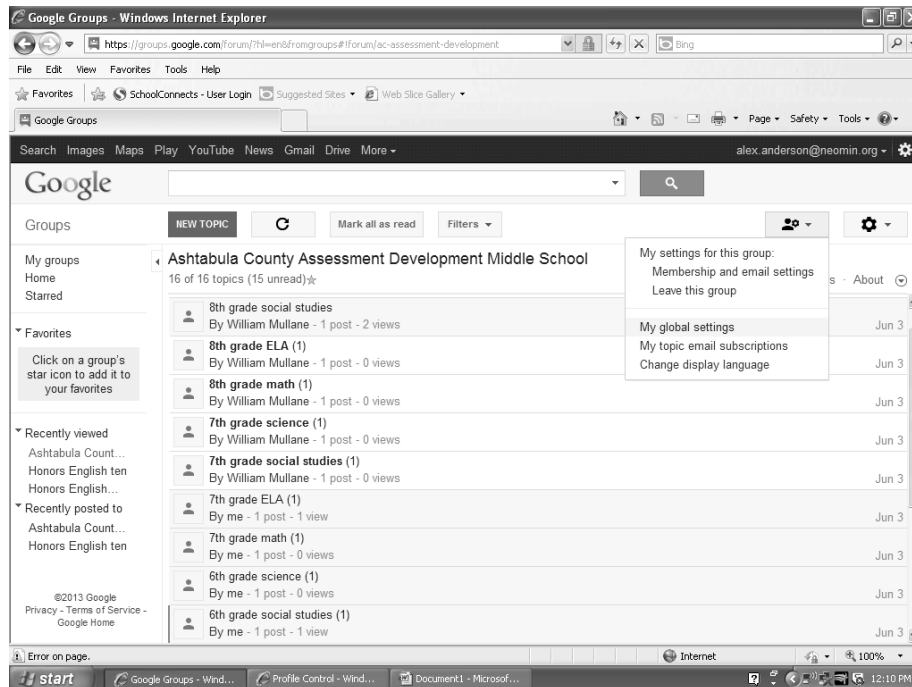
6. Post replies, attach files, and post new assessment questions within your group.

Ashtabula County Assessment Development: Middle School

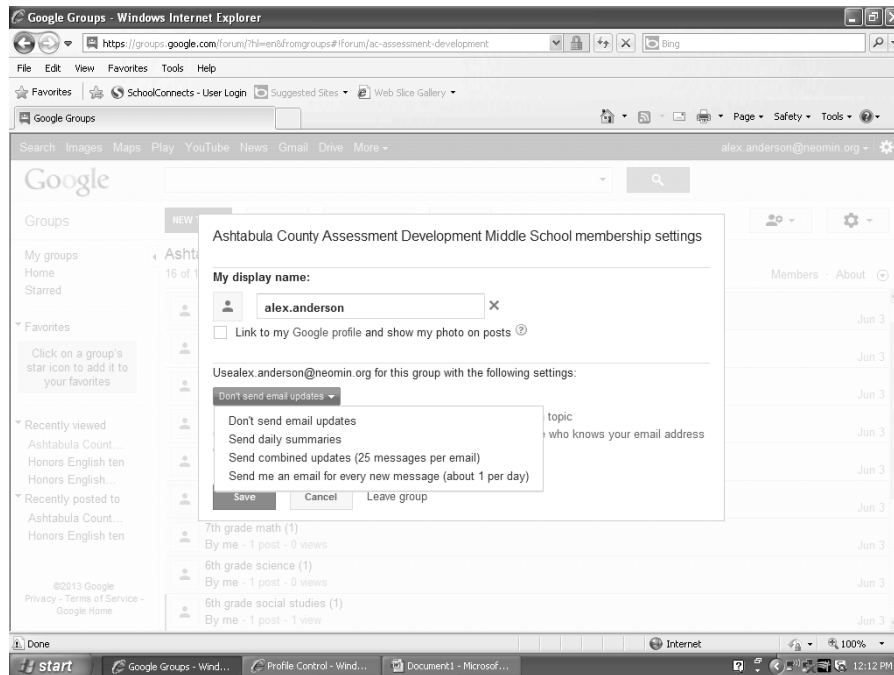
Google Groups User Guide

June 11, 2013

Turning off email alerts



1. Click the “my settings” button (Human Icon) and then select “membership and email settings.”



2. Choose “Don’t send email updates”

Ashtabula County Assessment Development: Middle School

Google Groups User Guide

June 11, 2013

NOTES: